



The York

Elevation C 2,783 sq.ft.



All illustrations are artist concept.

\$1,750,000

DEPOSIT STRUCTURE

\$20,000 Upon Signing

\$20,000 in 30 days

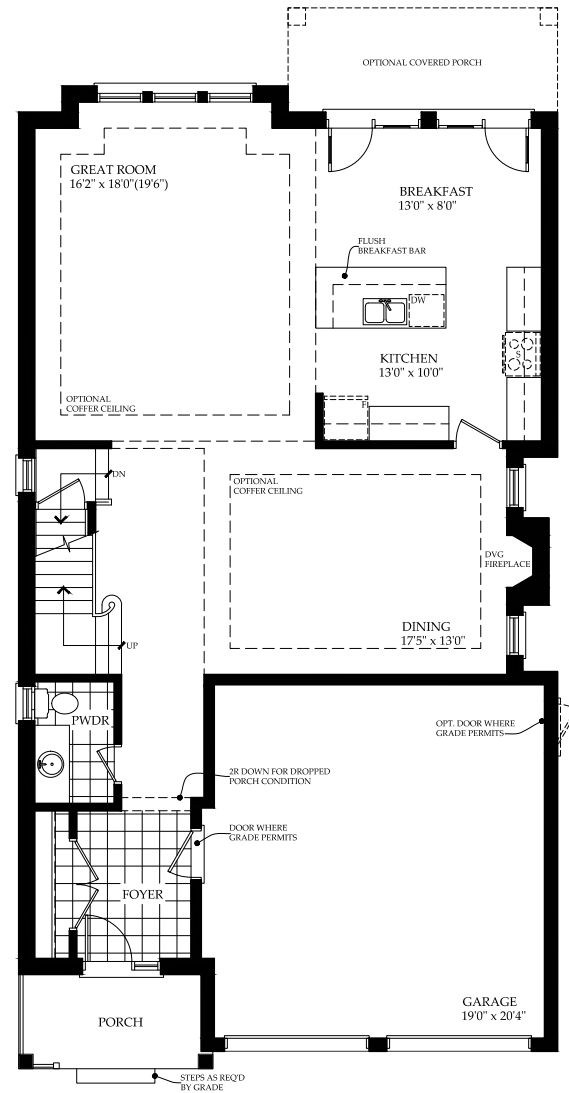
\$20,000 in 90 days

With finished basement

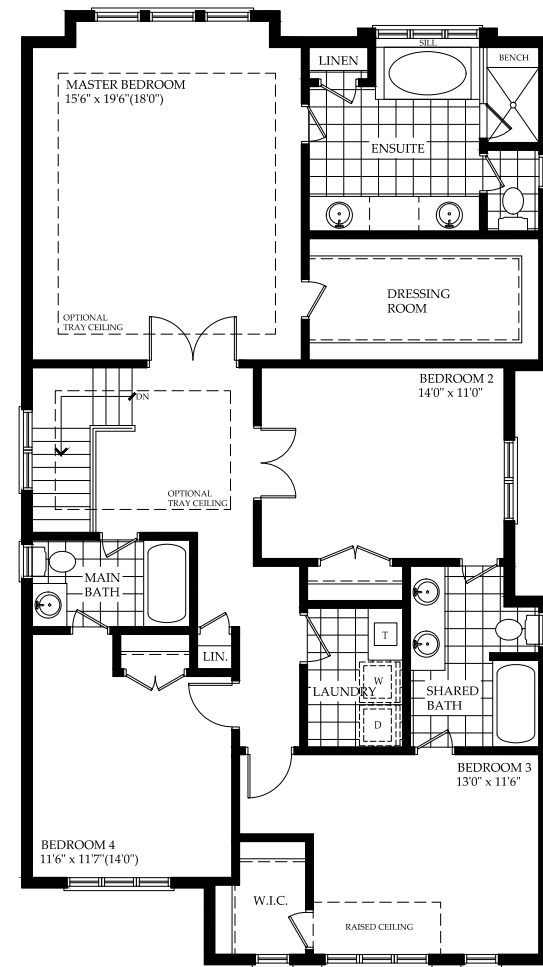
Taxes approximately
<1%



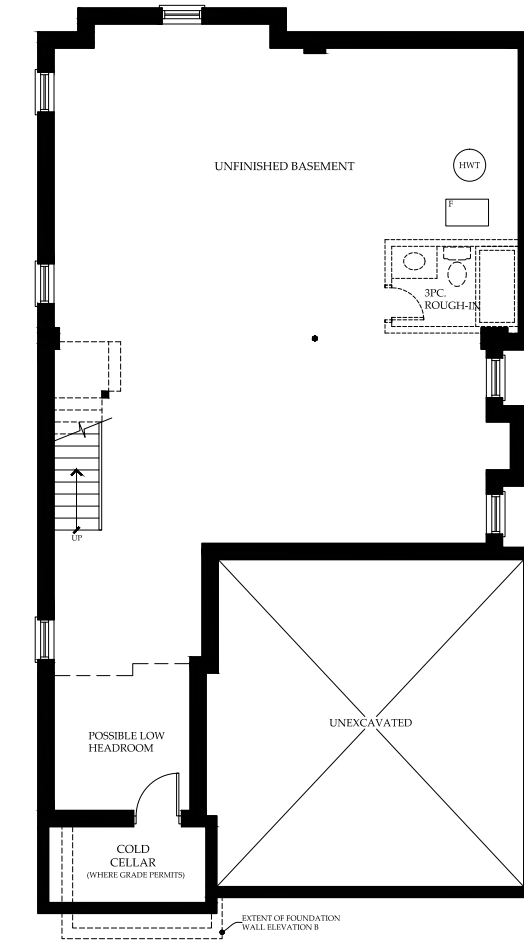
The York



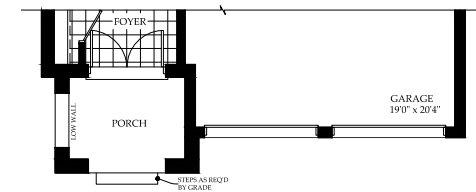
First Floor
Elev. A



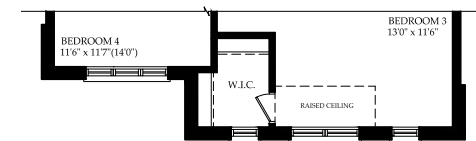
Second Floor
Elev. A



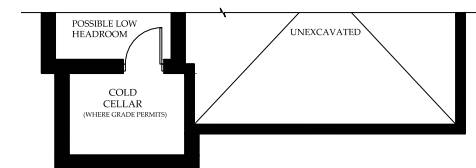
Lower Level



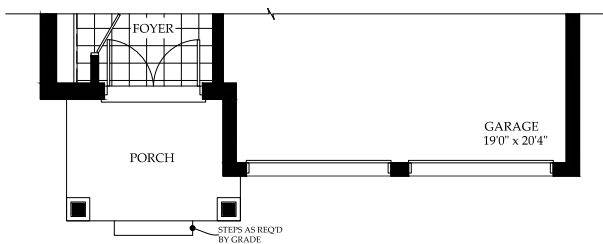
Part. First Floor
Elev. C



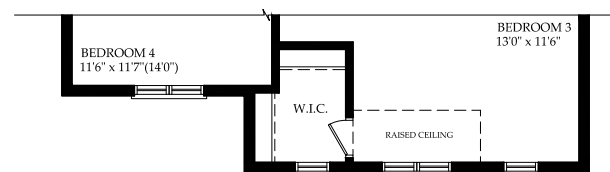
Part. Second Floor
Elev. C



Part. Lower Level
Elev. C



Part. First Floor
Elev. B



Part. Second Floor
Elev. B

The York

All illustrations are artist concept. Specifications, terms and conditions are subject to change without notice. *Note that plans and room dimensions may vary according to elevation. Plans may be built as the mirror image. E&O.E

The York

